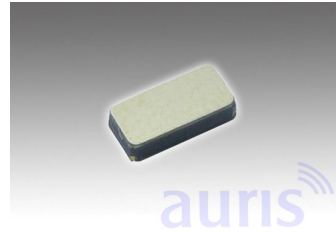


Features

- Surface mount
- High performance/cost ratio
- Excellent vibration & shock resistance

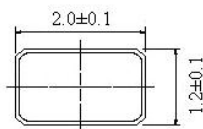


LC2012

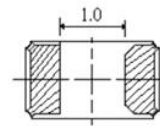
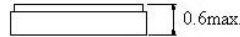
Specification

Type	LC2012	ESR max.
Frequency Range fundamental	32,768kHz	32,768kHz = 90K Ohm
Frequency Range over tone	-	
Frequency Tolerance at 25°C±5°C	±20ppm; available ±20ppm ~ ±50ppm	
Temperature Range	-40°C ~ +85°C, or order code	
Load Capacitance CL	standard 12,5pF, available 7pF, 9pF	
Shunt Capacitance C0	2pF max.	
Aging	±3ppm/year max	
Storage Temperature	-55°C - +125°C	Temp. Coefficient at 25°C± 5°C (ppm)
Drive Level	0,1μW max.	-0,045ppm/°C² max.
RoHS	compliant	
Contents Of Reel	3000 pcs	

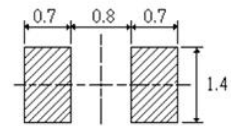
Drawing (mm)



top view

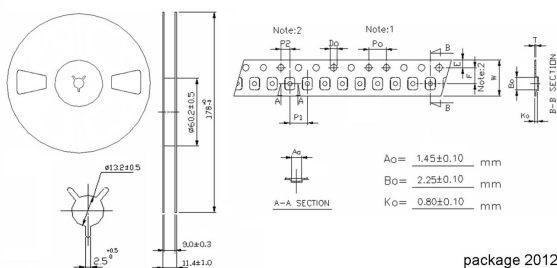


bottom view



soldering pattern

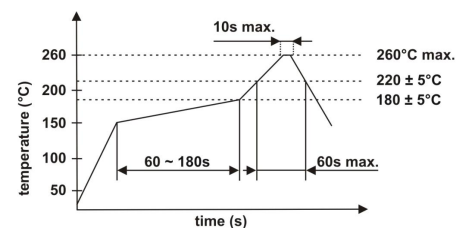
Tape dimension (mm)



package 2012

Symbol	Spec.
K1	-
Po	4.0± 0.10
P1	4.0± 0.10
P2	2.0± 0.05
Do	1.50 ^{+0.1} ₋₀
E	1.75± 0.10
F	3.50± 0.05
10Po	40.0± 0.20
W	8.0± 0.20
T	0.25± 0.05

Soldering profile



Order code

Q	- 32.768000k	- LC2012	- 20	- E	- 12.5	- TR
Part	Frequency	Package	Frequency tolerance	Temperature range	Load capacitance	Option
Q=Quartz	k=kHz	LC2012	±ppm (25°C)	E= -40°C ~ +85°C	12,5 pF 9 pF 7 pF	TR=Tape and reel X=Special options